



dream maker travel
we don't sell holidays.... we create dreams

Dream Maker Travel (Australia) Pty Ltd
39 Highland Crescent, Belmont QLD 4153
Tel: 07 3343 5422 Mobile 0414 445 279

Email: info@dreammakertravel.com.au
Web Site: www.dreammakertravel.com.au



Tour Escorts: Hilary Weir & Greg Boettcher

Iconic Kimberley Tropical Expedition Cruise

11 day Ponant Cruise + 3 nights Darwin + 3 nights Broome

Cruise On Board PONANT'S "Le Soleal"



17 Days Fly Stay & Cruise & Tour

29 July – 14 Aug 2025 \$ 13,998 per person twin share

Join our Celebrity Chef Host "Alastair McLeod"



Our Kimberley Group Tour Itinerary



This cruise is intended for English-speaking passengers. All lectures, comments by naturalists during the outings and visits as well as the announcements and services on board will be in English. Set sail for the **wild and grandiose landscapes of Kimberley**, following an exceptional **PONANT** itinerary. From **Darwin to Broome**, embark for an **11-day expedition cruise to one of the last unspoiled regions on the planet**. In one of the most picturesque parts of the region, the **Hunter River**, you will see wild mangrove forests where **saltwater crocodiles** live along with many species of birds. The highpoint of this cruise will undoubtedly be the discovery of the **King George River and the majestic Twin Falls**, the highest falls in Western Australia. During your cruise, the magnificent **bays of Vansittart and Swift** will offer you exceptional panoramas, between islands, secret inlets, caves and rocky overhangs. At **Ashmore Reef**, gaze out over the shades of blue of the Timor Sea off the mainland. The corals are home to extraordinary marine life in this incredibly beautiful paradise. You will also visit **Collier Bay**, where you will be able to admire the Montgomery Reef, home to vast expanses of lagoons and immense coral reefs. On the **Lacepede Islands**, take the time to admire the abundance of nesting birds as well as the **large population of turtles** residing in the lagoon. Your ship will take you along the most spectacular coasts in the entire region. With their falls, abrupt gorges, savannah, calm waters and desolate mountain chains, the wild lands of Kimberley are the promise of **an exceptional adventure**.

We are privileged guests in these extreme lands where we are at the mercy of weather and tide conditions. Landings on certain sites and the observation of certain wildlife cannot be guaranteed. They vary from day to day, making each PONANT cruise a unique experience. The Captain and the Expedition Leader will make every effort to ensure that your experience is as rich as possible, whilst complying with the necessary safety rules and precautions.

Group Tour Highlights

- **Return Qantas Airways Economy Class Flights (Business Class Upgrades Available)**
Brisbane – Darwin & Broome – Perth – Brisbane
- **Return Coach Transfers in Darwin**
- **3 nights Hilton Darwin Hotel with Breakfast**
- **Bombing of Darwin Day Tour with Lunch**
- **Full Day Coach Tour to Kakadu National Park with Lunch**
- **OPTIONAL Morning Jumping Crocodile Cruise Tour**
- **11 Days/10 nights PONANT Le Soleal Australian ICONIC KIMBERLEY Expedition Cruise**
- **On Board PONANT Le Soleal Open Bar - House Wines & Champagne, All Spirits & Cocktails**
(Except Premium Brands)
- **All Meals while On Board the Ship** (from Dinner in Darwin Embarkation to Breakfast in Broome)
- Captains Welcome Cocktail & Gala Dinner
- On Board Cooking Demonstrations with Celebrity Chef Alastair McLeod
- Unlimited Wi Fi
- All Port Charges (AUD 740 per person)
- Evening Entertainment & Events
- 24 Hour Room Service
- Join our highly qualified local expedition team
- Enjoy regular zodiac outings & shore visits to get close to Kimberley nature
- Discover billions of years-old landscapes & ancient rock art
- Listen to stories of the dreamtime from the oldest continuous culture on the planet
- Explore pristine mangrove environments, home to the world's largest living reptile
- **OPTIONAL** Tour Mitchell Falls by helicopter, from Hunter River.
- Witness unique tidal phenomena such as the Horizontal Falls
- **3 nights Cable Beach Resort with Breakfast & Return Transfers & Tours as per Itinerary**
- **Private Broome Panoramic Tour**
- **OPTIONAL** Willie Creek Pearl Farm Day Tour
- **OPTIONAL** Sunset Camel Ride on Cable Beach
- Group Farewell Dinner at Cable Beach Resort Broome



Tue 29 Jul 25 7.45 am Check-in Brisbane Qantas Domestic Airport

CONFIRMED FLIGHT QANTAS AIRWAYS QF 824

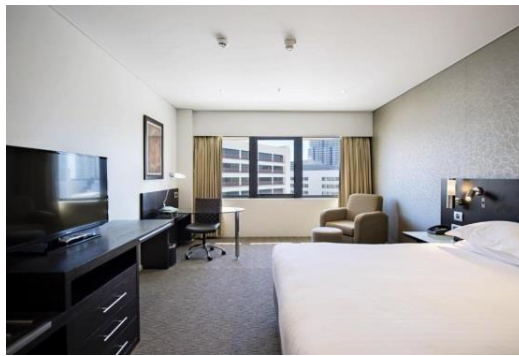
29 Jul 25 Tue **Check in at Brisbane Domestic**
29 Jul 25 Tue **Depart** Brisbane 09:00 Economy class
29 Jul 25 Tue **Arrive** Darwin 12:40 Non-stop
29 Jul 25 Tue **Arrival in Darwin**

Aircraft Type BOEING 737 PASSENGER JET
Flight Meals Brisbane - Hot Meal
Total Journey Time 4 hrs 10 mins

Tue 29 Jul 25 1.00 pm Group Arrival Coach transfer from Airport to Hotel

29 Jul – 01 Aug 25 Darwin Hilton Hotel

- 3 nights
- Studio with Garden View
- Breakfast Daily



Tue 29 Jul 25 Evening at Leisure on your own.

Wed 30 Jul 25 Bombing of Darwin Tour with Garry & Included Local Pub Lunch



Darwin Bombing Tour Itinerary

On this Morning tour, you will enjoy visiting many of the remaining relics and reminders from Darwin's involvement in World War II. A stop at the **Darwin Military Museum** is included and here you can wander the displays that showcase Australia and especially Darwin during the time of war.

At many of the stops you will have the opportunity to walk around and explore, or listen to the stories which are part of Australia's history and brought back to life, told by your guide. You'll see where the wharf was first bombed, remnants of the submarine boom cable, anti aircraft gun site, bullet holes left over from an attack by a Japanese 'Zero' plus much more.

After our Tour, join us for a Cold Beer & Lunch at a Local Pub



Thu 31 Jul 25 Full Day Coach Tour – Kakadu National Park with Lunch

This 1 Day Kakadu Tour from Darwin is one of the best day tours in Australia. Upon booking one of our Kakadu Day Tours you get to visit and experience the largest National Park in Australia. Along the way you also get to discover the ancient [Aboriginal Rock Art](#), go [Salt Water Crocodile](#) spotting, and view the exquisite birdlife in the Kakadu Wetlands. We leave early in the morning to get a head start on the day. We start off on [Stuart Highway](#) which is one of the longest roads in the country. Here you will be able to view the incredible terrain of the area and its uniqueness to this location in Australia and our Kakadu Day Tours. Next up we arrive in [Kakadu National Park](#). The park is listed as a World Heritage site by UNESCO, and covers more than 19,000 kilometres. You will be amazed at the variety of landscapes on offer in the park from coastal areas, to forests, open woodland, lowland hills and expansive flood plains. As you discover the land of Kakadu, you will also be amazed at the diverse population of animals both on land and in the water. Our Kakadu Tours from Darwin allow you to explore hundreds of species of birds, many plants and other animals. You will also witness history in the form of rock art, created by the Aboriginal community dating back to 50,000 years ago. Take a trip to the [Warradjan Aboriginal Cultural Centre](#). Here you will be able to visit with the [Binini People](#), the traditional locals of the park, as they welcome and introduce you to their lives in Kakadu National Park. You will then find yourself joining a local guide on the [Yellow Water Billabong](#) to cruise around looking for saltwater crocodiles. Have your camera ready in case you spot a croc or two. The chances are high as there are more than a thousand crocs living in these waters! After our buffet lunch, we will visit the [Nourlangie Rock Art](#) site, which will leave you in awe. This site has been a shelter for the indigenous community for thousands of years. Throughout the ages, the rock had been used as a place for Aboriginals to illustrate their culture. We get the chance to see this up close when you take the 1.5 kilometre walk around the base of the rock site. Your guide will lead you around the area giving you in depth information and stories about the different rock art paintings.





Thu 31 Jul 25 Optional Morning Jumping Crocodile Cruise Tour (+ \$ 99 per person)

Home to around 100,000 saltwater crocodiles, Australia's Top End is the best place to view these fearsome creatures in their native habitat. Join our **Morning Jumping Crocodile Cruise from Darwin** for your chance to observe the Adelaide River "salties" in the wild and learn all about them from an expert local guide.

Our tour begins in Darwin, where we will meet and make our journey to the Adelaide River. Once arrived, we'll jump on deck of the custom-made boats of the Spectacular Jumping Crocodile Cruise and head down the river in search of some crocs! As we cruise the waters of the Adelaide River, your expert wildlife guide will have plenty of fascinating information to share with you about crocodiles. You'll learn all about their feeding and hunting habits, their importance to the balance of the ecosystem and astounding facts about their biology. The crocodiles in the area are well known to the local guides, who recognise each croc and refer to them by name. Crocodiles are famous for their power and strength, which you will witness firsthand when it comes to feeding time. We'll draw them out from their shady hiding spots with a tempting piece of raw meat. Using their incredible strength, the crocodiles hurl themselves out of the water to snatch the meaty snack, just as they would when hunting a bird. You'll be blown away by their size and might! While crocodiles are definitely the main attraction, be sure to keep an eye out for some of the smaller animals living in the Murrumbidgee wetlands. The area is a well-known habitat for many birds, reptiles and animals. Then, once safely back on land, we'll jump back on the bus to head back to Darwin and drop you at your Hotel.



Welcome On Board Ponant's "Le Soleal"....



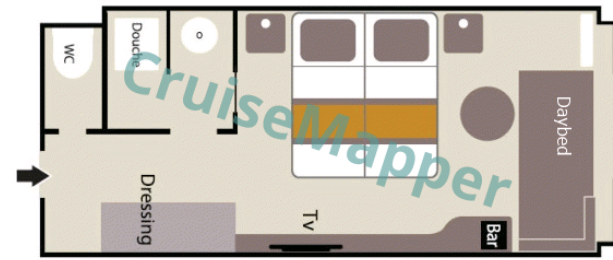
Your Stateroom Choices:-

Superior Ocean View Stateroom (No Balcony) **Deck 3** **Included in Package** 😊



(Oceanview) Superior Cabin

Layout (floor plan)



Max passengers: 3
 Staterooms number: 8
 Cabin size: 225 ft² / 21 m²

Deluxe Stateroom (with Single door Balcony)

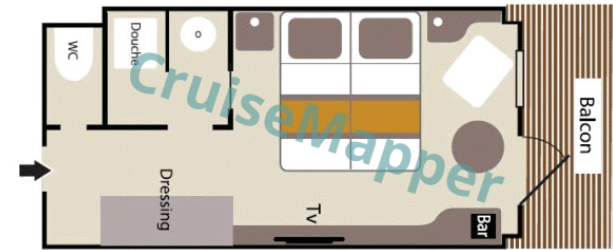
Deck 3

+ \$ 999 per person



(Balcony) Deluxe Cabin

Layout (floor plan)



Max passengers: 2
 Staterooms number: 28
 Cabin size: 200 ft² / 19 m²
 Balcony size: 45 ft² / 4 m²

Prestige Stateroom (with Sliding Balcony)

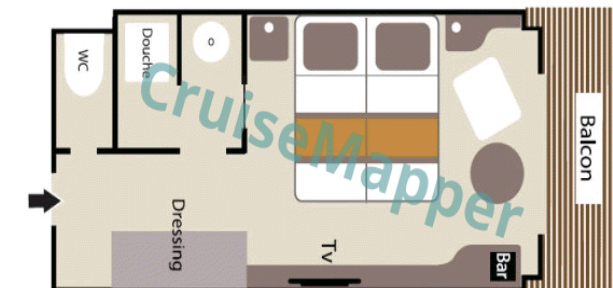
Deck 4

+ \$ 1998 per person



(Balcony) Prestige Cabin

Layout (floor plan)



Max passengers: 2
 Staterooms number: 92
 Cabin size: 200 ft² / 19 m²
 Balcony size: 45 ft² / 4 m²

1 AUG 25

Embarkation

Departure

DARWIN

1/8/2025 From 4:00 pm to 5:00 pm

1/8/2025 at 6:00 pm

Darwin is located in Australia's Northern Territory which is also known as the "Top End". It is the **capital city** and the most populated town of the Northern Territory. Darwin is a beautiful tropical city, a **melting pot of people and cultures**, over 50 different cultures live and work side by side that prides itself in its unique and friendly laid-back lifestyle. Come discover the town's still recent history through its emblematic buildings such as the new **Parliament House** opened in 1994, a magnificent example of tropical architecture or **Admiralty House** declared heritage place, a tropical-style home elevated on stilts that has survived two cyclones and numerous air raids.



2 AUG 25

Arrival

Departure

KING GEORGE RIVER

2/8/2025

2/8/2025

The journey up the **King George River** is nothing short of breathtaking. The 80-metre-high sides of the gorge display varying degrees of weathering of the ancient Warton sandstone. The colours and textures of the gorge change with the light as you travel further up the river creating a continual changing scenery that is simply stunning. The journey culminates at the **King George twin falls**; the highest single-drop falls in the whole of the Kimberley (80 m or 260 ft). Fed by wet season run-off the level of water cascading over the falls varies from year to year. Your Expedition Team will escort you in either the zodiacs or ships tenders to the foot of the twin falls, and explain all about the stunning geological formations of the canyon.



3 AUG 25

VANSITTART BAY

Arrival

3/8/2025

Departure

3/8/2025

Jar Island contains ancient rock art galleries depicting the Gwion Gwion style unique to the Kimberley region. Mainly neglected by, or unknown to, the early European researchers of Aboriginal culture in the Kimberley in favour of the dominant and more dramatic Wandjina art, Gwion Gwion art has in recent years gained world prominence. It is generally thought that this art may extend back to over 30,000 years before our time and represents the first wave of seagoing colonisers of the Australian continent. As it is, these are **the oldest detailed depiction of human figures in the world**. Join your Expedition Team ashore for a short walk, past some fascinating rock formations, to the site of the Gwion Gwion art galleries.



4 AUG 25

ASHMORE REEF (TECHNICAL STOP)

Arrival

4/8/2025

Departure

4/8/2025

Located 600km North of Broome, on the edge of the continental shelf, **Ashmore reef** consists of 3 low-lying tropical islands surrounded by coral reef. The islands have a combined land area of approximately 54 hectares and are a designated important bird area (IBA). Visitation to Ashmore reef and Islands is strictly controlled and most of the reef is designated as a sanctuary zone where access is prohibited. Our visit to Ashmore reef is required to ensure we comply with Australian government regulations. Should weather, sea and tide conditions permit there may be an opportunity for guests to undertake a zodiac tour to the vicinity of West Island.



5 AUG 25

CAREENING BAY

Arrival

5/8/2025

Departure

5/8/2025

Careening Bay was named by Lieutenant Phillip Parker King after his ship, *HMC Mermaid*, was careened there during his third voyage of discovery in 1820. King surveyed the western coast to complete the map initiated by Flinders 20 years earlier. The *Mermaid* had been leaking badly and King needed to find a shallow sandy bay where he could careen his boat to undertake repairs. At a high tide, on a warm September afternoon, he ran the *Mermaid* onto the sands. For ten days the *Mermaid* crew worked hard before refloating the vessel. The ship's carpenter carved the name of the vessel and the year into a conspicuous boab tree. The famous boab tree is now 3 metres wide and National Heritage listed. A reminder of a by gone era of exploration!



6 AUG 25

SWIFT BAY

Arrival

6/8/2025

Departure

6/8/2025

The **Bonaparte Archipelago**, is a stunningly rugged maze of islands stretching almost 150 km along Western Australia's remote Kimberley coast. Its colour and scale conspire to take ones' breath away. Its distant location has meant it has remained an unspoilt and remarkably pristine location to explore and experience. Phillip Parker King named "**Swift's bay**" after Jonathon Swift (1667-1745) the author of *Gulliver's travels*. The 'T' shaped bay is composed of heavily fractured sandstone providing an abundance of rock shelters. On the walls of these shelters are examples of both Wandjina and Gwion Gwion style rock art. Join your expedition team ashore for a guided walk to a number of rock art galleries depicting these unique rock art styles.



7 AUG 25

HUNTER RIVER

Arrival

7/8/2025

Departure

7/8/2025

Arguably one of the most scenic parts of the Kimberley coast, Prince Frederick Harbour and the **Hunter River** are lined with ancient rainforest pockets, pristine **mangroves** and mosaic sandstone cliffs. They are considered to be some of the most pristine mangrove forests in the world, containing up to 18 different species, supporting a rich and diverse fauna. The **sandstone escarpment** at the river mouth, known as "Kampamantiya" **rises over 200 metres high** before giving way to extensive mud banks and mangrove forests home to numerous bird species and the iconic **saltwater crocodile**. Our expert Expedition Team will share their knowledge with you as you explore this pristine mangrove environment by zodiac keeping a constant lookout for wildlife. You will also have the opportunity to reach the Mitchell Falls by helicopter from Naturalist Island beach.

Optional Excursion Pricing To be Advised **Duration: 90 Minutes**

Mitchell Falls Scenic Helicopter Flight & Landing



PONANT will be anchored in Prince Frederick Harbour and our fleet of zodiacs will be exploring the lower reaches of the Hunter River. The Mitchell falls are on the Mitchell River and the only way to see them is to take the scenic helicopter flight and landing at the falls. It is possible for guests to take the scenic helicopter flight as well as the included zodiac tour in the Hunter River. After a short Zodiac ride to a wet landing on Naturalist Island you will be given a safety briefing by the Helicopter pilot. The pilot will allocate each guest a seat in the helicopter. Helicopters are a combination of 3 to 4 seat Jet rangers and 4 to 5 seat long rangers. Helicopter type and loading is determined on a weight basis by Helispirit. Ponant yacht cruises and expeditions has no control over helicopter loading or seat allocation. After taking off from the beach enjoy a 20-minute flight to the stunning Mitchell Plateau. Your experienced pilots will keep you informed about one of the most scenic and biologically important areas of Western Australia. You will land next to the falls where you will have approximately fifty minutes to explore the area before your return flight. You will be unaccompanied in a stunning yet rugged and very remote area, with uneven rocky surfaces and little shade from the sun. From the landing site it is a short 10-minute walk to some great spots to photograph the quadruple drops of Mitchell Falls. You may even have time for a refreshing swim in the river, well above the saltwater crocodile habitats the Kimberley is renowned for. After your time on the plateau you will have another opportunity to view the vast expanse of the Kimberley region from the air as the skilled pilots take you along a different route for the return 20 minute flight to Naturalists Island.

- ✓ Helicopter type is determined by Helispirit.
- ✓ Helicopter loading & seat position is determined on weight basis by the pilots.
- ✓ For better photographic opportunities the rear doors of the helicopters are removed for the flights.
- ✓ A good level of mobility and fitness is required to alight the aircraft and walk around the plateau to view the falls

8 - 9 AUG 25

COLLIER BAY

Arrival

8/8/2025

Departure

9/8/2025

Lying to the east of the Buccaneer archipelago, the ancient landscapes of **Collier Bay** have been shaped by the **massive tidal movements** the region is renowned for, creating a photographer's paradise. With a tidal range exceeding 14 metres, recorded near Yule entrance at the southern end of the bay, they are among the largest in the world. This massive daily movement of water creates **unique phenomena that occur nowhere else in the world**. Nestled in the centre of the Bay is **Montgomery Reef**, the world's largest inshore reef system. As the tide falls a raging torrent of water cascades off the top of the reef, creating **turbulent 'rivers' and mini waterfalls**. At the Southern end of the Bay, **Talbot Bay** is home to the world's only '**Horizontal Falls**' described by Sir David Attenborough as "One of the greatest wonders of the natural world." Hidden in the many caves and grottos of this ancient landscape are a multitude of ancient **Rock Art galleries**. Here you can find spectacular examples of the Wandjina and **Gwion Gwion** styles.

As we are at the mercy of weather and tide conditions in this region, the activities mentioned above are only possible experiences and can't be guaranteed.



10 AUG 25

LACEPEDE ISLANDS

Arrival

10/8/2025

Departure

10/8/2025

The **Lacepede Islands** are Western Australia's most important breeding habitat for **Green Turtles** (*Chelonia mydas*), and have been named by BirdLife International as an **Important Bird Area (IBA)**. The breeding colony of Brown Boobies is possibly the largest in the world. Up to 20,000 Roseate Terns have also been recorded here. Other birds breeding on the islands include Masked Boobies, Australian Pelicans, Lesser Frigatebirds, Eastern Reef Egrets, Silver Gulls, Crested, Bridled and Lesser Crested Terns, Common Noddies, Pied and Sooty Oystercatchers. Join your expedition team for a guided zodiac tour to view the prolific wildlife. Due to the sensitive nature of the environment, landings are prohibited on Lacepede Islands.



11 AUG 25

BROOME

Arrival

11/8/2025 early morning

Disembarkation

11/8/2025 at 8:00 am

Located in the northwest of the Kimberley region and in the far north of Western Australia, the town of **Broome** is reputed for its history and its glorious **pearling era**. The fascinating Chinatown district, which is the historic city centre, and the famous Japanese Cemetery, dates back to 1896, and has a past marked by the immigration of numerous Chinese and Japanese workers, attracted by the prosperous pearl industry at the end of the 19th century and at the beginning of the 20th century. Broome is also famous for the “**Staircase to the Moon**”, an optical illusion created by the Moon reflecting on the sand banks at low tide, like a staircase climbing up towards the sky, a unique spectacle provided by nature...



Mon 11 Aug 25 9.30 am Broome Panoramic Tour with Free time in Broome for Lunch

This morning we Bid Farewell to our Family & Friends On Board PONANT Le Soleal 😊

Enjoy the best of what Broome has to offer. With a perfect tour to explore the culture, history and extraordinary landmarks around Broome: Cable Beach, Gantheaume Point, Broome Wharf, Town Beach, Chinatown and diverse pearling history. Near about the extraordinary pearling history, see the oldest buildings in Broome and the Broome history that makes Broome the Broome that it is today.

After our tour you will be dropped off in downtown Broome We will be transferred to Downtown Broome for some Free time to Shop & Explore on your own and enjoy a local lunch at one of the many Pubs or Eatery's. (Lunch own expense)

At 2.00 pm we will be picked up and Transferred to our wonderful “Cable Beach Resort Hotel”



11 – 14 Aug 25 Cable Beach Resort Hotel

- 3 nights
- Studio with Garden View
- Breakfast Daily



Mon 11 Aug 25 Afternoon & Evening at Leisure on your own.

Tue 12 Aug 25 Optional Willie Creek Pearl Farm Day Tour (+ \$ 125 per person)



Itinerary for Willie Creek Pearl Farm Day Tour

Join us on the multi-award winning **Willie Creek Pearl Farm Tour** and gain a unique insight into the fascinating process of modern pearl farming, from shell to showroom. See the inner workings of an operating commercial pearl farm and discover exactly what makes the perfect pearl. You will leave Willie Creek Pearl Farm as a pearling expert! Located only 38kms north of Broome, join us and discover the journey of the Australian South Sea Pearl among the magnificent Kimberley landscape. This is a must-do experience for anyone visiting Broome!

Getting There Is Half The Fun The journey to Willie Creek Pearl Farm is part of the experience. Relax to views of the Kimberley as you enjoy return transport in one of our air-conditioned coaches from your Broome-based accommodation. Listen to guided commentary throughout your journey as you travel through Broome, spot wildlife and arrive at the stunning tidal estuary of Willie Creek.

Pearl Oyster Nursery Learn about the intricate process of collecting and spawning *Pinctada maxima* oysters for producing pearls and how our commercial pearling team cares for the oysters. Pearling technicians are highly skilled and perform the delicate operations of seeding & harvesting from the pearl oyster nursery at Willie Creek Pearl Farm.

Cruise Willie Creek Cruise the calm azure waters and view live oysters suspended in their natural environment amongst the spectacular native flora and fauna. In the calm waters of Willie Creek, view an oyster long-line in action where we have a smaller quota of oysters on display to show visitors first-hand what takes place at our open water sea leases. Soak up the stunning scenery as you cruise the crystal-clear waters of Willie Creek alongside the mangrove-lined banks, keeping an eye out for amazing wildlife including barramundi, brolgas and our resident saltwater crocodiles.

Refreshments at Harvest Café

Take a moment to relax and enjoy the stunning views from Harvest Café as you enjoy tour refreshments, including the famous homemade family-recipe damper.

Pearling Masterclass

Discover the journey of our Australian South Sea Pearls, from shell to showroom, in a fascinating masterclass that includes an exciting live pearl harvest presentation. Learn the complex anatomy of the *Pinctada maxima* oyster and how it forms nacre to create the world's finest pearls and how it differs from other pearls seen around the globe. See an oyster from Willie Creek Pearl Farm harvested to reveal the pearl two years in the making, with the value or quality of the pearl unknown until that very moment!

Visit our Showroom

Visit our stunning jewelry showroom to learn how to care for pearl jewelry and have fun trying on our fabulous pearls.

Tue 12 Aug 25 **Optional **Sunset Camel Ride on Cable Beach** (+ \$ 118 per person)**

This Afternoon, why not join our Sunset Camel Ride along beautiful Cable Beach. This iconic experience will leave you feeling relaxed, captivated and the team in red will ensure you leave with the most remarkable lifelong memories. The sunset camel ride, being our most popular tour, is a relaxing and informative experience along the beautiful white sands of Cable Beach. Watch the awe-inspiring backdrop of the sun setting over the Indian Ocean, from atop your camel. *Please note we operate a 100kg maximum weight limit per person*



Wed 13 Aug 25 A day at Leisure to relax and enjoy your Cable Beach Resort & all things Broome

Wed 13 Aug 25 5.00 pm Dream Maker Travel Farewell Drinks & Dinner

Come join us for our INCLUDED Group Farewell Dinner at Cable Beach Resort tonight.



Thu 14 Aug 25 11.00 am Group Departure Coach Transfer from Hotel to Airport

		CONFIRMED FLIGHT	QANTAS AIRWAYS	QF 1655
14 Aug 25	Thu	Depart Broome	14:00	Economy Class
14 Aug 25	Thu	Arrive Perth	16:30	Non-stop
14 Aug 25	Thu	Arrival in Perth Terminal 4		
		Aircraft Type	Airbus Industrie A320	
		Total Journey Time	2 hrs 30 mins	

		CONFIRMED FLIGHT	QANTAS AIRWAYS	QF 940
14 Aug 25	Thu	Depart Perth	17:35	Economy Class
14 Aug 25	Thu	Arrive Brisbane	23.55	Non-stop
14 Aug 25	Thu	Arrival in Brisbane Domestic		
		Aircraft Type	BOEING 737 PASSENGER JET0	
		Total Journey Time	4 hrs 3 0mins	

Thu 14 Aug 25 11.55 pm Welcome Home to Brisbane